

DIRECTIONS to STAMFORD OFFICE
300 Atlantic Street, Stamford, CT

**ABOUT OUR SCHOOL LAW
PRACTICE GROUP**



MERRITT PARKWAY FROM NORTH:

Take Exit 35. Turn right onto High Ridge Rd. for approximately 2.5 miles. High Ridge Rd. will become Summer St., stay on Summer for approximately 1.5 miles. Take a left onto Broad St. At 1st light, take right onto Atlantic St. At 2nd light take left onto Tresser Blvd. At 1st light make left onto Edith Sherman St. Take immediate left into Public Parking for 300 Atlantic St.

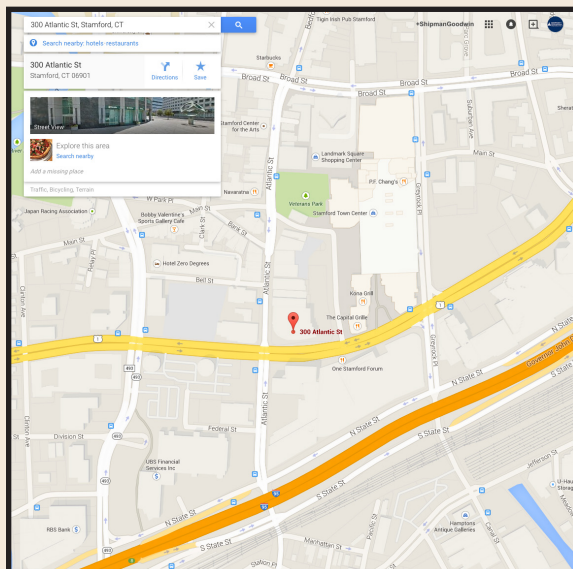
I-95 SOUTH:

Take Exit 8. At 3rd light, take right onto Atlantic St. Go through 2 lights and at 3rd light take right onto Tresser Blvd. At next light take left onto Edith Sherman St. Take immediate left into Public Parking for 300 Atlantic St.

FROM NYC I-95 NORTH:

Take Exit 8. At end of ramp take left onto Atlantic St. Continue for 2 traffic lights and take right onto Tresser Blvd. At next light take left onto Edith Sherman St. Take immediate left into Public Parking for 300 Atlantic St.

Please bring your parking ticket to the seminar for validation.



The collective scope of experience of Shipman & Goodwin's School Law practice is evident in the number of clients who rely on us, and how often we're called upon as an authority in education law. Our School Law attorneys represent over 100 local and regional school districts throughout Connecticut and in neighboring states. We also represent numerous private schools, colleges and universities statewide. We are able to combine our extensive education law experience with the resources of a large firm to provide the highest quality legal assistance promptly and cost-effectively.

To learn more, visit our school law site:

www.ctschoolaw.com



**Hot Topics in
Special Education:**

*A Complimentary Seminar
sponsored by the
School Law Practice Group*

**Thursday, June 11, 2015
9:30 am - 12:00 pm**

**300 Atlantic Street
Stamford, Connecticut**



One Constitution Plaza
Hartford, CT 06103-1919
860-251-5000

300 Atlantic Street
Stamford, CT 06901-3522
203-324-8100

1875 K St., NW - Suite 600
Washington, DC 20006-1251
202-469-7750

289 Greenwich Avenue
Greenwich, CT 06830-6595
203-869-5600

12 Porter Street
Lakeville, CT 06039-1809
860-435-2539

www.shipmangoodwin.com

Hot Topics in Special Education

Presented by Shipman & Goodwin's School Law Practice Group

Registration Form

Registration is on a first-come, first-served basis

About the Workshop

We are delighted to offer this encore session of "Hot Topics in Special Education" in our Stamford office.



Join school law attorneys Andy Bellach, Gwen Zittoun and Melika Forbes for a timely discussion of hot topics, including:

- How to handle non-attending students
- Residential placements
- Transition services
- SLD/dyslexia issues
- OSEP's guidance on IEEs and bullying/FAPE issues
- The M.O.R.E. Commission's special education recommendations
- and more...

Register online at www.shipmangoodwin.com by clicking on June 11th on the Events Tab.

Breakfast and beverages will be served.

JUNE 11 - STAMFORD

Where: 300 Atlantic Street
Stamford, CT 06901

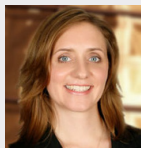
Time: 9:30 AM to 12:00 PM

9:30 - 10:00 AM - Registration
and breakfast

10:00 AM - 12:00 PM - Workshop

<http://www.shipmangoodwin.com/rsvp.aspx?Show=13009>

Speakers



Andreana R. Bellach
203-324-8109
abellach@goodwin.com



Gwen J. Zittoun
860-251-5523
gzittoun@goodwin.com



Melika S. Forbes
203-324-8159
mforbes@goodwin.com

You may register online by clicking on the Events Tab and on June 11, or you may fill out the following registration form. Please register any guests who plan on attending as well.

No. Attendees*: _____

Name(s): _____

Company: _____

Address: _____

Tel: _____

E-mail(s): _____

**Seating is limited. Please contact us in advance at info@goodwin.com if there will be more than 2 attendees from your district.*

Please return your completed registration form to:

SHIPMAN & GOODWIN LLP

Marketing Department

Attn: Jade Tarca

One Constitution Plaza

Hartford, CT 06103-1919

Tel: (800) 585-0331 Fax: (860) 251-5214

E-mail: jtarca@goodwin.com